



ALARM.COM
THE WAY SECURITY SHOULD BE



ALARM.COMSM
THE WAY SECURITY SHOULD BESM

Alarm.com Overview



Alarm.com services are offered to customers through licensed security dealers.

Alarm.com Interactive Monitoring and Notification Services are designed to:

- Make security systems more secure - 100% wireless and line-cut-proof.
- Provide a highly interactive service that is valuable because it is useful every day, not just on rare occasions.
- Enable real-time reporting of useful information from security systems to customers - not just alarms.
- Allow people to monitor and control any site from anywhere in the world at any time through an-easy-to-use Web interface.
- Provide peace of mind without invading anyone's privacy.
- Not rely on vulnerable phone or broadband connections.

Interactive Services:

- Monitor the status of your home or business security system anytime from anywhere in the world through the Web.
- Remote control features include arming and disarming, light and thermostat automation, and user access programming - all through an-easy-to-use Web interface.
- Get real-time e-mail and voice notifications for Normal Activity events, like doors opening and motion activity - even when the system is disarmed.
- Access up to 60 days of event activity history on the website. Custom reports show exactly the information that interests you.

Wireless Signal Forwarding:

- Line-cut proof. Burglars can't beat the system by cutting the phone line.
- A phone line connection is not required.
- Wireless module checks in at least once a day to ensure everything is OK.
- Wireless network is not affected by cell phone usage and covers 85-90% of U.S. population.

Alarm.com Customer Experience

Alarm.com customers can monitor and control their security systems through the Internet, and from Internet-enabled phones, PDAs and pagers.

Status

System is **disarmed**.

Front Door is open.
Living Room Motion is Activated.

Change system state:

Disarm

Disarm
Arm Stay
Arm Away

Last

Use this screen to create schedules that will turn your system on or off at the times you set.

Add New Schedule

Light Day(s) Turn On

Porch Light Every Day 8:00 am

Away from home option: Make these times approximate

Current Schedules

Mon-Fri, Porch Light turns on at 7:00 am and off at 7:00 pm

Mon-Fri, Hall Light turns on at about 5:30 pm and off at 7:00 pm

[Search By Device] | Search By Event

Devices 8 Jan, 2004 Entire Day

Event	Time and Date
Opened	10:48 am, 8 Jan
Activated	10:40 am, 8 Jan
Idle	11:54 pm, 7 Jan
Activated	8:58 pm, 7 Jan

From: ADC Security Sent: Sun 2/22/2004
To: Smith, Steve
Subject: The FRONT DOOR was opened at 10:45 AM

The Smith Home at 123 Garden Street: The FRONT DOOR was opened at 10:45 AM on Sunday, February 22, 2004.

This is a monitoring message from Alarm.com. To learn more about this event or control your system, log into <https://www.alarm.com>

ADC Security - 100% customer satisfaction.

ALARM.COM is Easy to Use!

www.alarm.com

ADC Security Your security company logo here

Security History Automation Notifications People Profile

[System Summary] | Sensors

Current Login

Login Name: your name

System: your house

Navigator

- Security
 - Summary
 - Sensors
- History
- Automation
- Notifications
- People
- Profile
- Frequently Asked Questions

Status

System is **disarmed**. No Alarm or Issues have been reported in the past 72 hours.

Garage Door is open.
Front Door is open.
Kids Room Motion is activated.

Change system state: Disarm

See [history](#) for more information about past Alarms and Issues.

Last 15 Events

- Front Door Opened, at 10:45 am, 22 Feb 04
- Garage Door Opened, at 9:28 am, 22 Feb 04
- Kids Room Motion Activated, at 8:30 am, 22 Feb 04
- System Disarmed by Jane Smith, at 8:10 am, 22 Feb 04
- Kids Room Motion Idle, at 11:05 pm, 21 Feb 04

Notifications

These notifications reflect the current arming state: **disarmed**.

- if **Garage Door** opens then [email](#).
- if **Front Door** opens then [email](#).
- if **Liquor Cabinet** opens then [call](#) and [email](#).
- if **Pool Gate** opens then [call](#) and [email](#).
- if **Kids Room Motion** activates then do not contact anyone.
- if **Kids Room Panic** activates then sound siren, [call](#) and [email](#).
- if **Kitchen Smoke** activates then sound siren, [call](#) and [email](#).

From: ADC Security Sent: Sun 2/22/2004 10:45 AM
To: Smith, Steve

This is a monitoring message from Alarm.com. To learn more about this event or control your system, log into <https://www.alarm.com>

ADC Security - 100% customer satisfaction.

The Alarm.com website and notifications are branded with the security dealer's name and logo.

How Alarm.com Works



Once activity data is transmitted to Alarm.com, it is processed and stored. Event information can be sent to the customer via phone or e-mail in real-time according to the customer's notification settings. A Web-based user interface allows the customer to maintain complete control of the system at any time.



Customer Web Access and Notifications

When an alarm signal is received from a customer site, the signal is immediately forwarded from Alarm.com to the customer's central station for processing and emergency dispatch.



Central Monitoring Station

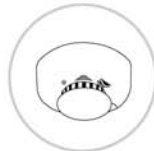


ALARM.COM Network Operations Center



Dispatch

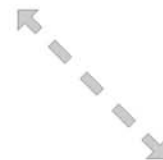
Sensors communicate events to the control panel. The Alarm.com Module inside the control panel analyzes the data coming from the sensors, and determines whether to transmit the data to Alarm.com's Network Operations Center.



Sensors



**GE Security Control Panel
with ALARM.COM
Wireless Module**



2-Way Wireless Connection



A phone line connection to the central station is **NOT** required!

Customer Examples



Senior Monitoring

Location: Scottsdale, AZ
Dwelling: 1-Level SFH
Occupants: 80-year-old grandmother

The customer had used a monitored security system for more than 20 years. During this time, the phone line was cut and the home was successfully broken into several times, even though the system was armed.

With Alarm.com

- Alarm signals are transmitted wirelessly to the central station. Even if the phone line is cut, alarm signals will be delivered.
- Monitoring of door and motion activity, even when the system is disarmed, makes it possible for family members to monitor the customer without invading her privacy.



Family Monitoring

Location: Fairfax, VA
Dwelling: 3-Level SFH
Occupants: Family with teenage children

The customer wanted a monitoring service that would provide more information and interaction on a daily basis. In particular, the customer was interested in something to help monitor the comings and goings of his three children.

With Alarm.com

- “Normal Activity” monitoring provides the right level of activity detail, without invading the privacy of family members.
- The customer is able to monitor activity on all the main entry/exit doors, his ground level windows, and the liquor cabinet. If any of these sensors opens when they shouldn't, the customer is notified via e-mail or phone.



Second Homes

Location: West Palm Beach, FL
Dwelling: Waterfront SFH
Occupants: Retired couple

The customers had recently bought a vacation home in West Palm Beach and were looking for a way to keep track of people who were allowed to be in the house when they were away.

With Alarm.com

- Automated e-mail notifications alert them whenever the system is armed or disarmed.
- Light schedules created on the Alarm.com website make the house appear occupied and deter would-be burglars.
- Notifications for power outages and water leaks prevent damage to the home.
- Monitoring of door and motion sensors allows the customers to see the activity of their cleaning service and other guests inside their home.



No Phone Line

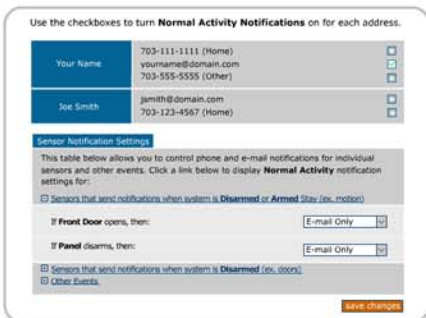
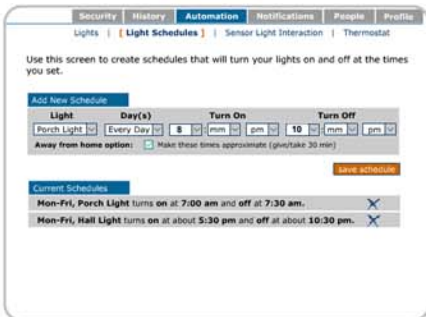
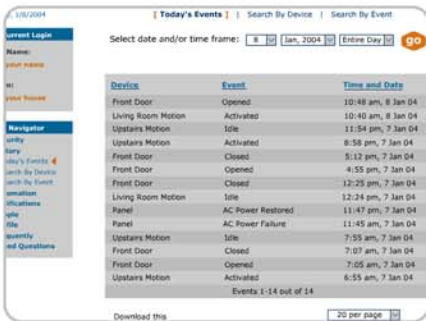
Location: San Francisco, CA
Dwelling: 2-BR Condo
Occupants: Young Couple with Small Child

The customers were a young couple and were accustomed to using cell phones exclusively. They believed that the land-based phone line was an extra and unnecessary expense in their limited budget.

With Alarm.com

- The customers are able to have central station monitoring without the need for a land-based phone line.
- Alarm.com transmits alarms to the central station quickly without using a phone line.
- The customers are able to monitor the activity of their babysitter when they go out from their mobile phones and wireless PDAs.

Alarm.com Service Plans



WIRELESS SIGNAL FORWARDING

BASIC INTERACTIVE

ADVANCED INTERACTIVE

100% Wireless from the Home

All alarms get to your central station...



...even if the phone line is cut.



See current alarm status and recent panel activity on the Web.



Remote Control from Anywhere Through the Internet

Arm and disarm the system.



See current system status.



View 60-days of event history.



Control lights and thermostats.



Customize notifications for arming, disarming, alarms and trouble events.



Normal Activity Monitoring

Get alerted when any door, window, cabinet or safe opens.



Monitor motion activity in real-time through the Internet.



Find out if there hasn't been any activity on a specific sensor.



Access 60-days of activity history on any door, window, cabinet, safe, or motion sensor.





ALARM.COM
THE WAY SECURITY SHOULD BE

Become An Alarm.com Dealer

For more information about becoming an Alarm.com reseller, please contact Alarm.com via e-mail or phone.



info@alarm.com



877.389.4033 (Toll Free)

The Alarm.com wireless module is compatible with GE Security Concord, Concord Ultra, and Simon control panels*.



Concord Security System with Alarm.com Module



Simon Security System with Alarm.com Module

Alarm.com wireless modules are available for purchase directly from GE Security.

Part # 60-861 Concord Gateway Module

Part # 60-971 Simon Gateway Module

* Older versions of these panels may not be supported.